

# **LASU-ICSF-FAO-WORLDFISH**

## **DEVELOPMENT OF COMMUNICATION MATERIALS AND TOOLS FOR NATIONAL WORKSHOPS ON SMALL-SCALE FISHERIES GUIDELINES IMPLEMENTATION IN NIGERIA.**

**Final Report prepared by Shehu Akintola and Kafayat Fakoya, (LASU)**

## COMMUNICATION PRODUCT TOOLS DEVELOPED AND PRODUCED.

A number of shareable communication product tools and materials were developed, produced and distributed to participants, guests and the audience. These products had logos of the Food and Agriculture Organization (FAO), International Collective in Support of the Fish Workers (ICSF), LASU, WorldFish and the International Year of Artisanal Fisheries and Aquaculture (IYAF 2022) imprinted on them to create more awareness on small -scale fisheries sector, Small-Scale Fisheries Voluntary Guidelines (SSF VG) and sensitize the public on the national workshops for the implementation of the SSF VG.

Communication product tools and materials developed and supplied for the national workshops included:

1. Brochures: LASU designed brochures which served to introduce the importance of small-scale fisheries and the SSF Guidelines in global and national contexts, respectively. The brochures were scripted in English and after wide consultations; translators identified from the academia and teaching profession were commissioned to translate into Yoruba, Pidgin English and Hausa being three local languages widely spoken among the ethnic groups whose primary occupation is fishing. Copies of the brochures were printed and delivered by the FAO Office in Nigeria via a vendor. Also, LASU produced additional copies for wider distribution beyond the workshops. Samples of the brochures are shown in the Appendix.
2. Infographic: An infographic to illustrate the importance and contributions of small-scale fisheries to livelihoods, food and nutrition security and well-being in Nigeria was designed and developed by Sarah Erickson (WorldFish). LASU undertook the printing of the infographic.
3. Banners/flex posters, T-shirts, tote- bags, face caps, sports bottles, mugs and notepads and pens: These seven products were designed by the LASU team for publicity while the FAO Nigeria Office facilitated production and delivery through a vendor LASU also produced additional quantities of banners/flex posters and, notepads and pens to complement the supply from the FAO.
4. Other communication products from FAO: Fifty copies of the handbook on SSF Voluntary Guidelines (English), IYAF 2022 tote-bags and SSF Voluntary Guidelines card games were received from FAO, Rome.

APPENDICES

SAMPLES OF COMMUNICATION PRODUCTS AND TOOLS

The collage displays various communication materials in Hausa. On the left, there are brochures with text and illustrations of fish. In the center, a poster titled 'HYBRID NATIONAL WORKSHOP ON AWARENESS FOR THE IMPLEMENTATION OF THE SMALL SCALE FISHERIES (SSF) GUIDELINES IN NIGERIA' is visible, featuring logos for Lagos State University, ICSF, and WorldFish. Below the poster is a smaller brochure titled 'Ministry Guidelines for Sustaining Sustainable Small Scale Fisheries in Nigeria'. The materials include text, diagrams, and illustrations of fish and people, all presented in Hausa language.

I. Picture of the brochure in Hausa Language.



II. Picture of the brochure in Yoruba Language.



III. Picture of the brochure in Pidgin Language.

yi tsiriri matakan wajen saman kifaye da aha a yawancin jihinin Arewa.

A cewa Hukumar Lafiya ta Duniya, bambancin abinci mai kyau ga yara 'yan kasa da shekara biyu amma suna ne ta hanyar cin rukunomin abinci takwas da saka haɗa da nau'in 'noma, kifi da kai'. A wani bincike da aka gudanar a shekarar 2019 na sama da yara 12,000 a Najeriya, kifi shine nau'in abinci da ake yawan amfani da shi daga nau'in 'noma, kai da kifi'. Duk da haka, ba taamuniya ba ce cewa yara suna karfafa muti fafancin kaso na kifi a cikin gida duk da muti girman bukatun abinci da saka shi don kamun Kwajiyoyin ciki. Rashin daidaitawa kifaye a mutakin gida yana da mummanun sakamako kan yanayin abinci mai gina jiki na yara, yana shafar gima da ci gaban su. A jihinin Arewa, yara sun watsani 6-24 ko sa iya cin kifi a yayin da yawan jama'a da ke fama da matsalar rashin abinci mai gina jiki fiye da yaran da ke zama a yankin Kudu. Yawan talanci haɗe da sauran abubuwan yana iya zama mai yuwuwa cikas ga saman kifaye a matsayin abinci mai yawan gina jiki da haɓaka bambancin abinci.

Nau'in kifi sun bambanta ta fuskar micronutrients, fatty acid da faturotin da suka kama. Wuna Ganaman kifi da ke fatowa a halitta kai tsaye za a iya cin su ga gaba daya kuma suna iya zama muti mahimmancin abinci mai gina jiki kuma sun zane nau'in darajar tattalin arziki da yawa wanda aka samar daga kama kifi da kuma ta hanyar kiwo, kamar tilapia da kifi kifi. Duk da haka, saboda rashin bayanni a cikin bayanan abinci, wani amfani na iya zama ba a sun sa ba kuma wannan yana iya haɗawa da cin kamunan kifi ruwa mai kyau wanda ke da wadattaccen omega-3 fatty acids.

**MATSAYIN AL'ADU NA KIFI DA KAMAN KIFI NA KANSAN SIKELI**  
Mahimmancin kifi a matsayin abin noma al'adu ya wuce kiman abincina. Kamun kifi shine musam da ke haɗa a'annan kamun kifi. Yana da alaƙa da abubuwan da saka gabata kuma yana ba da kafiin musa jiki don daidaitawa zuwa duniya mai canzawa. Masu kifaye, kifi da abincin teku mahimmun hutunwa ne a cikin abin noma kabilaici, ayyuka musa tsarki ko na addini, waƙoƙi, almara, zane-zane, kayan ado da kuma a cikin fasaha da kira na zamani. Duga cikin nau'o'in amfani da kifaye da kamun kifi a al'adu dabun-daban sun haɗa da rera waƙoƙin logi don karfiya samar da kifi, a matsayin abin da ya shafi dabbobi don ruɓuta abubuwan tsire, a matsayin abubuwa musa tsarki don inganta kayayyeci, a matsayin abubuwan wasanni da riƙoƙi don haɓaka haɗin kai. Fakarar al'adu dabun-daban da haɓaka mahimmancin amfani, arziki, kuma a matsayin magami a cikin waƙoƙoƙi na raihanoyi gargajiya.

**ILAK MAHALI NA SSF DA MUHIMMAN ABUBUWAN CANJIN SSF**  
Akwai karancin taimaki mahalli da aka danganta ga SSF fiye da alaƙa da kiyayyayin kamun kifi musamman da wani sasan tattalin arziki da hana kamun kifi ko ruwa su. Yawan amfani da jama'a wata a wajen gida kifi a matsayin hanyar kiyayyayin wata ko da gudummawa ga sara dazurkai kuma yawan tsaki kamun ruwa haɓaki har sai na kashi sabbin

fasahoti da fasahobin adana kifi da kuma jin shaki wuraren da yawa a cikin SSF. Har ila yau, abin damuwa shi ne yawa adalin tsace da ake bukata wajen gina wuraren da yawa wuraren shakatawa. Ko da yake ana lokaci da cewa yag-tairakawa ga sara dazurkai, bai yi la'akari da haɓaka mata kamun kifi ba da kuma ayyukan da ake da su na sarrafa biyoyi da dahan daji a mutakin al'amun wanda ke haɓaka detsar wuraren shakatawa.

A gefe gaba kuma, akwai dimbin abubuwan da ke haifar da canji a kam SSF da ke shafar yawan amfani kamun kifi da rayuwar tsaki kamun kifi. NSSF ita aiki darsinkin tsarin jami' na doka amma mutki ya kasance a tsakiya ko sama-fasa, ba shi da haɗa kai da waƙoƙi. Dokokin kamun kifi da yawa sun buƙa duk da cewa ana gaba da yin gyare-gyare. Rashin cin gashin kai, haɗin kai, rashin tsassan kafi da iya aiki na hukumomi, da karancin kasafi na kasafin kuɗi ga SSF manyan fayyadaddun ma'aikatar Kifi da kamun kifi a mutakin jihohi da tarayya, ba da h. Ma'aklanta SSF samsa da karancin kafiin Kwajiyoyi, rashin kafi na tsari da keƙancewa daga tattaunawa kan tallafa dimakrafuya, kuma akwai buƙayayyancin sarari a cikin jagancin don yin zaɓe da tsarin wajen tsara manufoti.

Yawan al'ummomin kamun kifi ba su da ci gaba kuma ba su da tsashe abubuwan more rayuwa. Kadamar da kayayyaki, haɓakar yawan jama'a da bunawa tattalin arziki na abuben ruwa tare da haɗin kai sama da damar da za su iya kama yawan rashin lafiyar al'ummomin kamun kifi zowa talanci, haɓaka barazancin rikice-rikice tsakanin samsa da kaura ta jiki, kuma yiwuwar rashin adanci na zamantakewa ga SSF tare da mummanun tsari ga jin dadi da kuma rayuwa mai dorewa.

Yayin da ake ganin cewa Afrika na beyar da gudummawa a kalla daga dukkan nahiyoyin duniya wajen tsara da tsakar gas da suyin yanayi, amma abin mamaki, ita ce ke daskar raiyin kuɗin fasahobin da suka ci gaba, wanda ke samar da iskar gas mai girma. Tairin sauyin yanayi yana ran gabuwa, musa, yuwuwa da bambanta. Amfalyar ruwa, hawan teku, zairay kasa a yankin gafer teku da kuma fari na lokaci-lokaci a yankin Arewa mai damuwa ita su ran zai ta'azzara da tsarin sauyin yanayi. Wadannan tsarin za su haifar da canje-canje a yanayin kasa na kifi da yuwuwar rage tsakawa kifi ruwa kashen sauyi-suyin samsa'o'in kamun kifi, kaura da samsa'o'in al'ummomin kamun kifi, asar kayan aikin kamun kifi da kuma zowa wuraren kamun kifi.


Yawan sara dazurkai na yin tsari kan magudatar ruwa da wuraren tsaki da ke tsakawa samar da ruwa da kifayen ruwa, biyo ko, ko ruwa tsakiya wata wajen dazurkai yanayi da sauyin yanayi. Samsa'o'in tsakiya sun haɗa da garbata ruwa, mamaye tsakawa halima musa hana tsakawa kamar wata irin shukar ruwa (fish farming) samsa'o'in tsakawa samsa'o'in tsakawa biyoyi da cikasawa, samsa'o'in tsakawa samsa'o'in tsakawa tsakiya da garbatar ruwa.

**DALILAN ZUBA-JARI A KANSAN SIKELI NA KAMAN KIFI**

1. Tare da karancin yawan jama'a, tsammanin matakan tsakawa da kamun kifi 21, NSSF ita ba da damuwa

samar da tsaro daga talanci da kuma hanyar rayuwa ga musanta, mata musa aikin kifi da matawa.

2. Cin kifi da sauran kayan abinci na ruwa a cikin kwanaki 1000 na farko na rayuwa suna da tsarin mai yawa don inganta abinci mai gina jiki ga mata da yara don magance karancin abinci mai gina jiki yayin wannan muhimmin lokaci na girma.



3. Cin kamunan kifaye yana haɓaka halitta da amfani da Ganaman simadarar na gargajiya, abinci mai yawan carbohydrate a kukaice yana haɓaka rigala a cikin jama'a musa rami.
4. Kifi daga SSF yana tare da karbowar al'adu a cikin ranƙan daban-daban kuma galibi ana cin su ko da zaman kayan yaji.
5. Idan aka kwatanta da kifayen kiwo da kamun kifi na musanta'anta, SSF hanyar ce ta samar da abinci da ba ta da yawa don haka ba da filko ga wannan fanni na iya taimaka wa Najeriya a burinsa na yanke layaƙin carbon.
6. Kamun kifi na al'adu irin su "wuraren shakatawa" ko "sacala" na iya zama mai dorewa idan an farfafa gandun daji na gida da kuma sarrafa ayyukan girbi.



**HYBRID NATIONAL WORKSHOP ON AWARENESS FOR THE IMPLEMENTATION OF THE SMALL SCALE FISHERIES (SSF) GUIDELINES IN NIGERIA**

Ministry of Agriculture, Food and Aquaculture of the United Nations

WorldFish

Small is smart, big is value.

IV. Picture of the brochure in English Language.



V. Picture of a flex poster and banner at the venue of National Workshop for State Actors and Non State Actors on Day 1

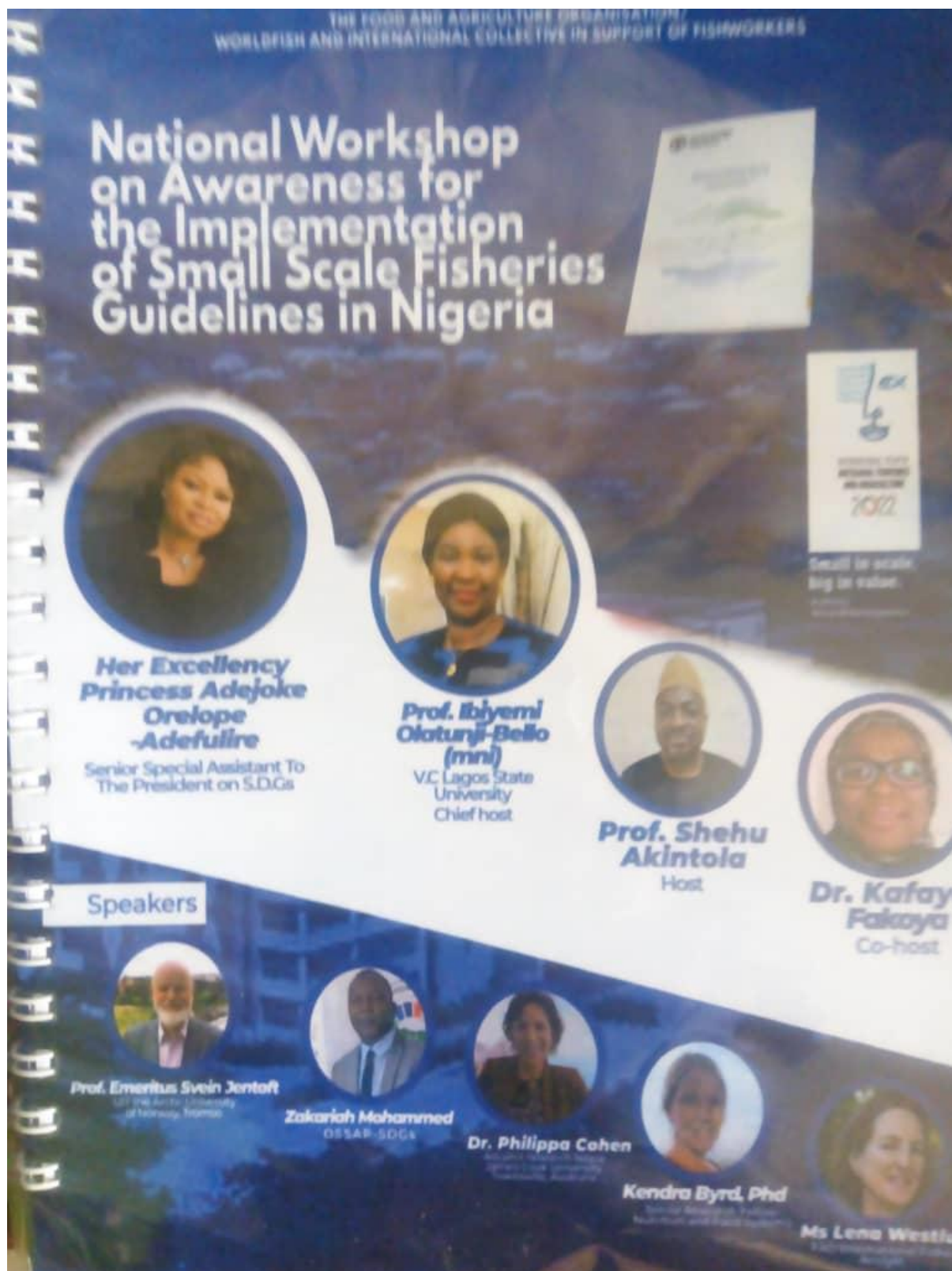


VI. Picture of banners at the venue of National Workshop for State Actors and Non State Actors on Day 1

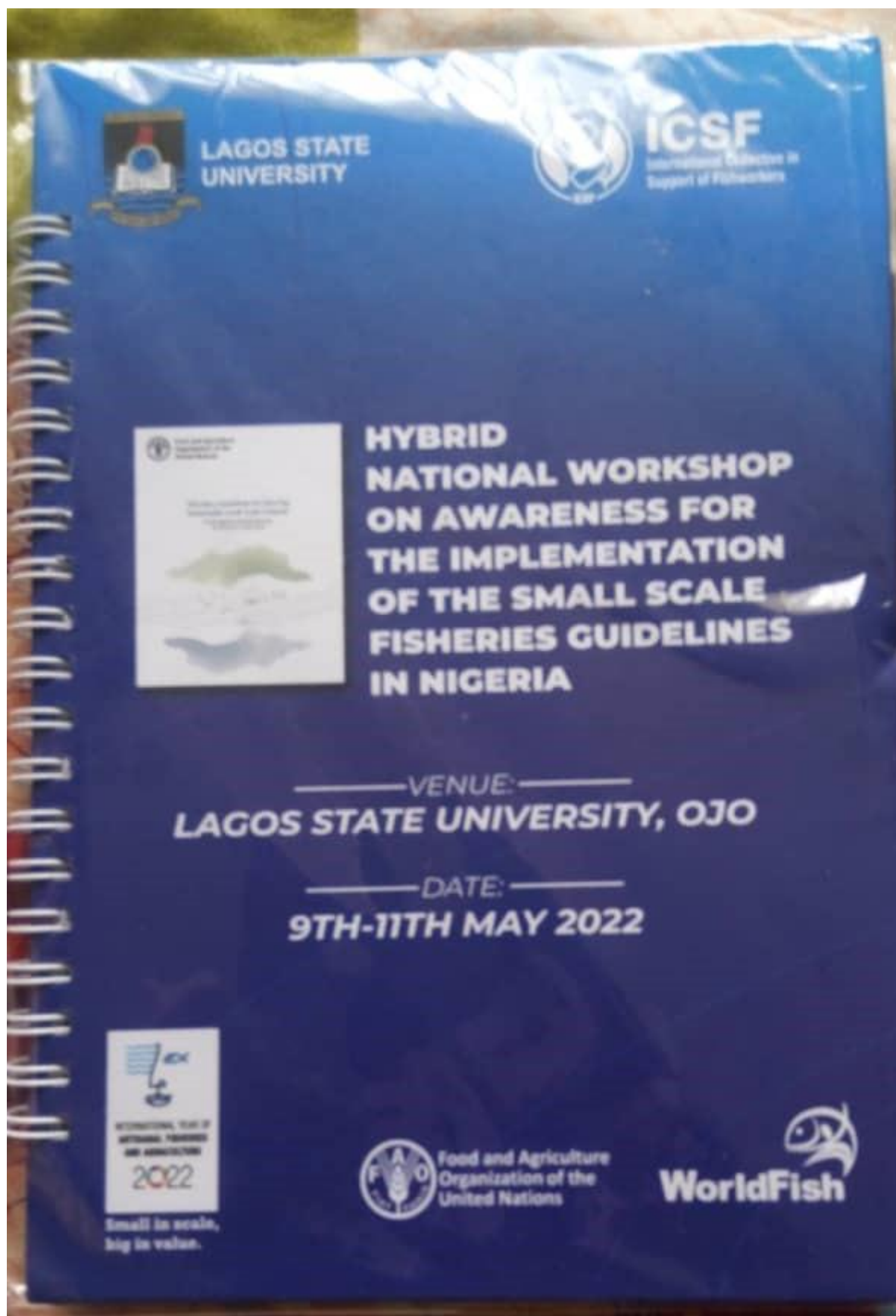


VII. Picture of a banner at the gate of the Lagos State University





VIII. Picture of note pad designed and printed by LASU



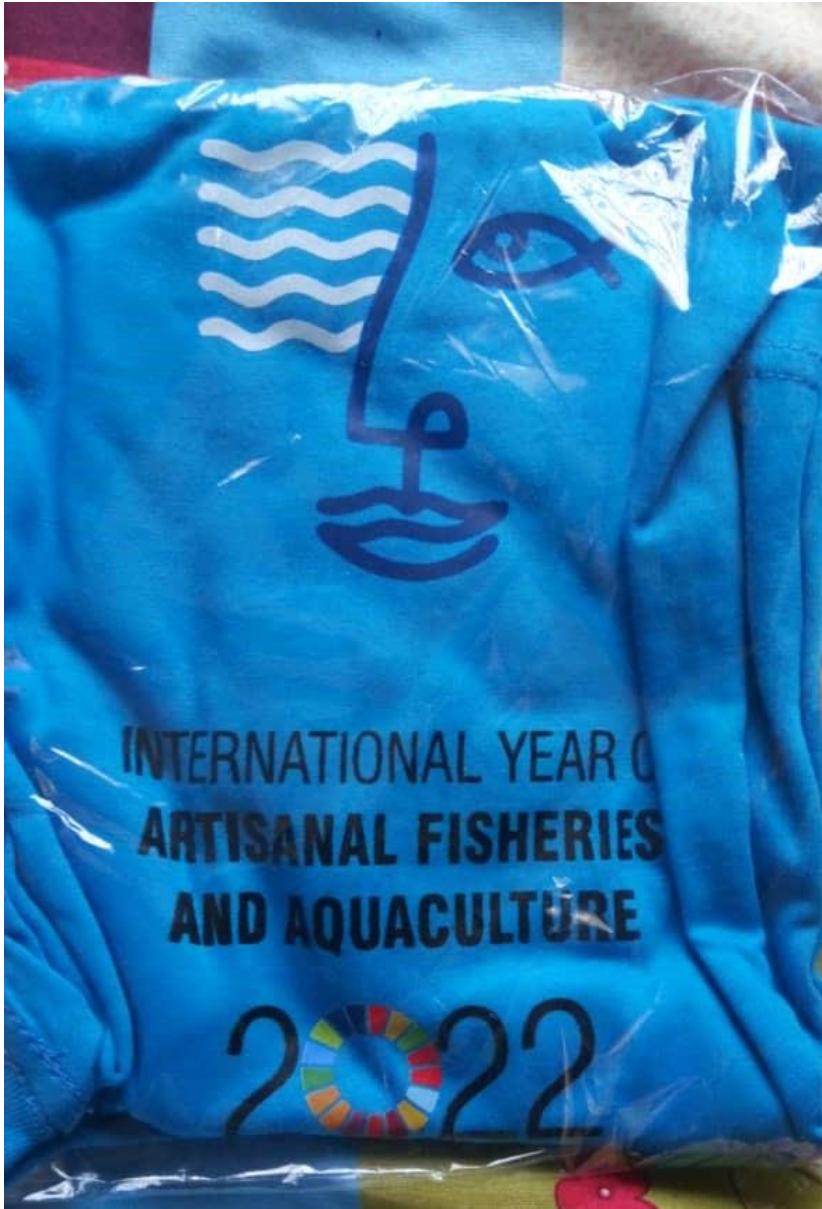
IX. Picture of a Note Pad



X. Picture of a Pen



XI. Picture of a Face Cap



XII. Picture of a T-Shirt



XIII. Picture of a Sports Bottle



XIV. Picture of a Tote – Bag